



## **Plustek SmartOffice PS286 Plus**

TWAIN compatible workgroup scanner to support thousands of image and document management applications.

### **Scans a variety of document formats**

In addition to standard two sided business documents up to 14" long, the *SmartOffice PS286 Plus* can also scan : IDs and Business Cards - any rigid ID card up to 1.2mm thick. A3 Sized Documents - with special stitch mode and included document folder.

### **Scan with the touch of a button!**

Create searchable PDFs, scan to e-mail, scan to FTP, OCR, BCR, copy, or file documents by simply pressing a button. Nine different scanning jobs or functions can be easily setup to meet your scanning needs.

### **Compatible with TWAIN and WIA drivers and useful software bundled**

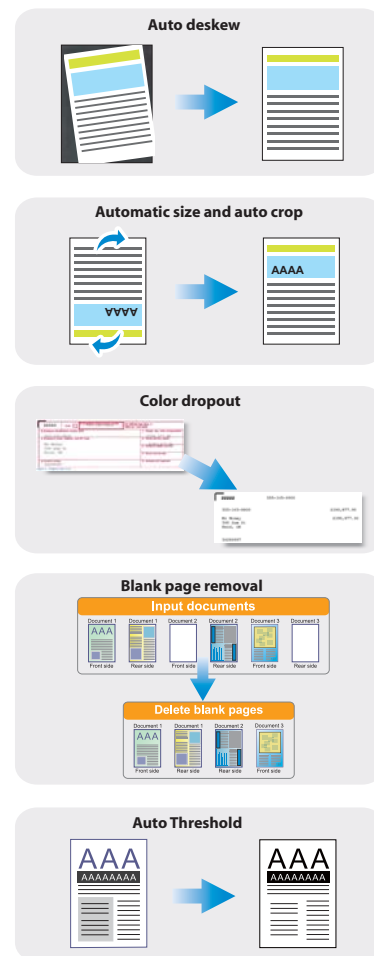
The *SmartOffice PS286 Plus* is bundled with a suite of document management and scanning applications that allow you to be productive right out of the box. In addition to searchable PDF, the *SmartOffice PS286 Plus* can create all popular image file formats and editable Microsoft Office files. Industry standard TWAIN and WIA drivers ensure compatibility with thousands of image enabled applications.

# Plustek SmartOffice PS286 Plus

TWAIN compatible workgroup scanner to support thousands of image and document management applications.

## Image Processing Features

- Auto Crop & Deskew**  
 automatically straightens a skew image and crop according to actual paper sizes.
- Auto Rotate**  
 automatically rotates documents to paper orientation according to its contents.
- Color Dropout**  
 increases forms processing accuracy by eliminating red, green or blue printed forms.
- Blank Page Removal**  
 automatically removes blank pages after the document is scanned.
- Automatic Threshold**  
 automatically adjusts for darker or lighter areas on a document when scanning in black and white, eliminating the need to manually adjust contrast and threshold for each page.



## Software Bundle



NewSoft Presto! PageManager® 7



Abbyy FineReader Sprint Plus



Plustek DiCapture



Plustek DocAction

## System Requirements

IBM Compatible PC, with Pentium IV 2.0 GHz processor (Pentium IV 3.0 GHz processor recommended) / CD-ROM Driver / One available USB Port (USB 2.0 recommended) / 1GB RAM or higher recommended / 800 MB free HDD space (1 GB or larger recommended) / High Color graphic card (VGA or higher) / Windows XP, 2000, Vista, 7.

## Specification

Optical Resolution	600 dpi
Hardware Resolution	600 dpi x 600 dpi
Technology	Color Contact Image Sensor (CIS)
ADF Capacity	50 sheets (A4/Letter, 70 g/m <sup>2</sup> or 18 lb.), Max. thickness under 5mm (0.2") 20 sheets (Business Cards) Plastic Card, Max. thickness under 1.2 mm.
<small>Note: Maximum ADF capacity varies, depending upon paper weight.</small>	
ADF Scanning Speed	25 ppm (200 dpi, Grayscale mode, A4 Portrait) 25ppm (200 dpi, B&W mode, A4 Portrait) 8 ppm/8 ipm (200 dpi, color mode, A4 Portrait)
<small>Note: Results may vary upon your scanning application, computer processor and system memory.</small>	
Scan Area(W x L)	Max. 216 x 356 mm (8.5" x 14") Min. 13.2 x 13.2 mm (0.52" x 0.52")
Acceptable Paper Sizes(W x L)	Max. 220 x 356 mm (8.66" x 14") Min. 50.8 x 50.8 mm (2" x 2")
Acceptable Paper Weight for ADF	50 to 105 g/m <sup>2</sup> (14 to 28 lb.)
Daily Duty Scan (Sheets)	1500
Roller Lifetime (Scans)	100000
Pad Lifetime (Scans)	20000 (Customer replaceable)
Power Adapter	24 Vdc, 0.75 A
Interface	USB 2.0 High Speed
9 Function Keys	Scan, Copy, OCR, File, E-mail, Scan, Copy, BCR, File
Physical Dimensions(W x D x H)	263 x 127.5 x 148 mm(10.36" x 5.02" x 5.83")
Weight	1.66 Kgs (3.66 lb.)
Protocols	TWAIN Compliant



© 2012 by Plustek Inc. All rights reserved. All registered trademarks are the property of their respective owners.

Headquarters: sales@plustek.com