

## PLANETPRESS SUITE

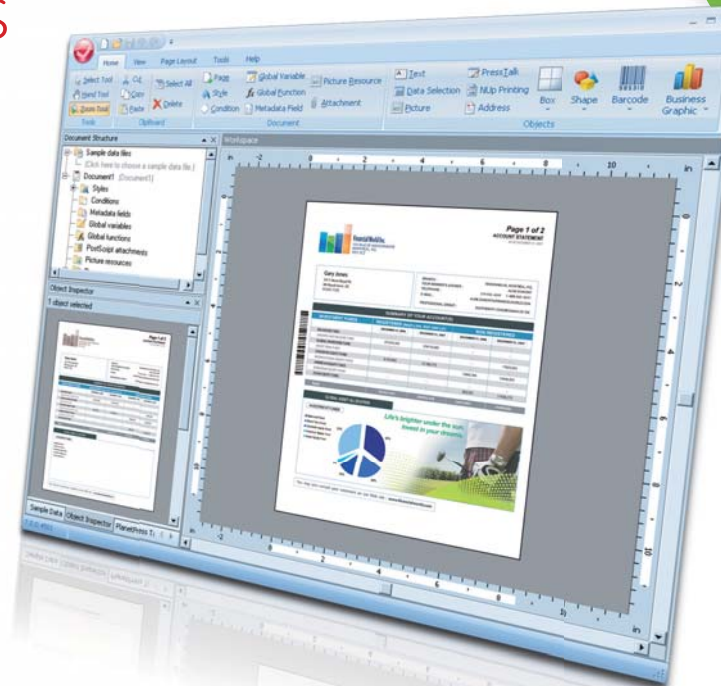


## THE COMPANION MODULES

### PlanetPress Design

PlanetPress Design allows you to create variable content documents from scratch or repurpose and enhance existing business documents. You can create documents for every need from a simple mail merge to complex multi-part business forms. All documents created with PlanetPress Design can have built-in conditions and rules to dynamically add barcodes, graphics & logos, page numbers, targeted marketing messages or envelope inserter controls, all based on the information found in the data or the original formatted document.

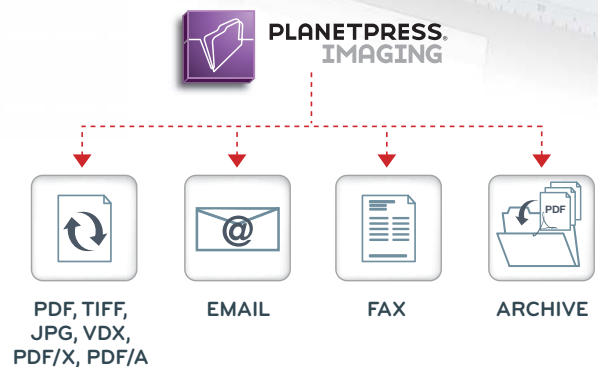
PlanetPress Design is included with the purchase of any of PlanetPress Suite software modules. It has an intuitive interface with various design features that are easy to use yet powerful enough to create simple to complex variable content documents. The possibilities are endless with PlanetPress Talk, a straightforward scripting language that allows you to fully customize your documents to answer highly complex or unique requirements.



### PlanetPress Imaging

PlanetPress Imaging allows users to generate PDF, TIFF, JPG, VDX, PDF/X, PDF/A and AutoStore versions of variable content documents to automatically archive, email and fax them. It also generates an index file for the location and retrieval of specific pages of the job with PlanetPress Search or by a third party electronic document management (EDM) system.

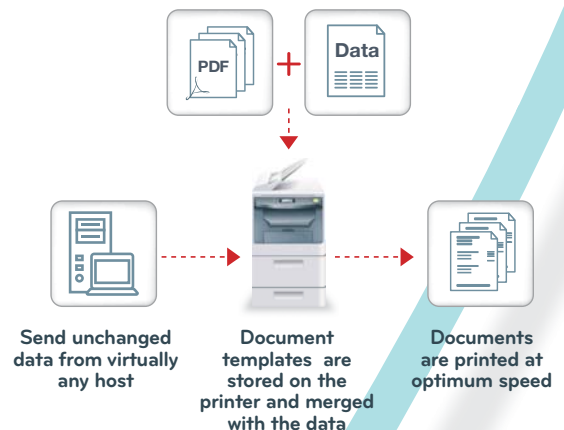
PlanetPress Imaging requires one of the PlanetPress Suite workflow tools to be installed and includes an unlimited license of PlanetPress Search to instantly query the archive database and retrieve single or multiple documents. PlanetPress Search can use the results to create a new PDF from the retrieved pages even if they come from separate documents.



### PlanetPress Printer Licenses

PlanetPress Printer Licenses are required to print in printer centric mode and can be used either with PlanetPress Design only or in conjunction with one of the PlanetPress Suite workflow tools.

The printer centric mode of printing occurs when a variable content document template resides on the printer's hard drive and is merged at high speed with incoming host data at the point of print. Printer centric processing may often be the most efficient way to print variable documents since the merging of data with the document template occurs on the printer itself, reducing print file size and making use of the full power of the printer's engine, resulting in minimal use of bandwidth and maximum print performance. It's the ideal solution for high-volume production printing or for distributed printing on a wide network.





**PLANETPRESS. DESIGN** ■■■■

**FEATURES:**

Input data in almost any format including:  
XML, ASCII, Line Printer, PDF, ODBC  
Compliant Database formats, CSV, Channel  
Skip and more

Connect with most host applications including  
Mainframe, AS/400, UNIX, Windows®, ERP/  
CRM, Revenue Cycle Software, Commercial  
Print Applications and more

Capture fully composed documents instead  
of data, either ready-made PDF files or print  
streams from any Windows-based applications

Extract text from input documents and add  
or modify content, or apply business rules for  
workflow capabilities

Design simple to complex business  
documents with conditional text, images,  
graphics or pages

Apply business rules for conditional output  
based upon information contained in the data  
or print stream

Use the scripting language PlanetPress Talk for  
unique applications or complex requirements

Control your printers' finishing features  
automatically and conditionally

Use the drag and drop functionality to simply  
design documents or to apply business rules  
and conditions

Add data-driven graphics and charts to your  
business documents using native PlanetPress  
Design business graphs or the advanced  
capabilities offered by Microsoft® Excel®

Generate industry-standard barcodes,  
including 1D, 2D and OMR

Create consistent documents using the same  
RIP engine as Adobe® Acrobat® Distiller®

Let PlanetPress Design handle data overflow  
by generating additional pages dynamically

Ensure colour consistency by relying on  
advanced color management functions that  
adjust to printer and monitor profiles

Clip in or clip out parts of images or of fully  
composed documents

Automate tasks and reduce your workload

**PLANETPRESS. IMAGING** ■■■■

**FEATURES:**

Create PDF, PDF/X, PDF/A, TIFF, JPG,  
AutoStore or VDX file formats

Process several jobs simultaneously using  
PlanetPress Imaging as a multi-threaded  
production server

Control all settings available in Adobe Acrobat  
Distiller when you create PDF files

Set rights on PDF files for printing or text  
modification and copying

Tag any number of fields found in your variable  
data documents to create an index file

Use PlanetPress Search to query and retrieve  
indexed files

Modify the index file structure to fit the  
requirements of most EDM systems.

Archive documents to your existing electronic  
document management system

Send files via email using either SMTP  
or Outlook automatically

Fax files automatically

**OBJECTIF LUNE**

BUSINESS COMMUNICATIONS - YOUR WAY

For more information contact  
your local office, or visit:

[www.objectiflune.com](http://www.objectiflune.com)

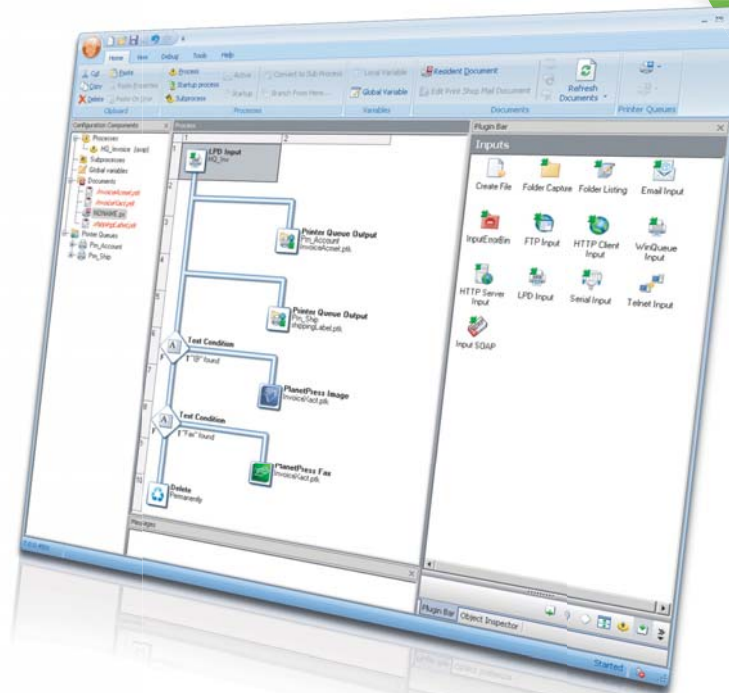
# PLANETPRESS SUITE



## THE WORKFLOW TOOLS

PlanetPress Suite includes three workflow tools for the automation of the processing, distribution and printing of your business documents.

Installed on a server, they can be set up to automate all tasks related to the document processes of an organization, snapping seamlessly to the systems already in place. From one central location they can capture data streams from almost any source and based on the information found in the data, execute the appropriate task, whether it's routing a print job to the appropriate local or remote printer, splitting the data into several files, query ODBC-compliant databases for additional information, apply business rules, redirect conditionally etc. They can send documents to PlanetPress Imaging in order to create a digital version that can be automatically emailed, faxed or archived.



### PlanetPress Watch

PlanetPress Watch is the perfect workflow tool when the only mode of printing required is printer centric. It makes a minimal use of bandwidth and achieves maximum print performance and is perfect for high volume production printing on a dedicated printer or for remote and distributed printing.

### PlanetPress Office

PlanetPress Office is perfect for medium print volumes where you want the ability to capture existing documents instead of data to enhance them and/or add in workflow capabilities. It can print to any printer using a Windows® driver without a license, when basic control of finishing options is sufficient.

### PlanetPress Production

PlanetPress Production combines the abilities of the other two workflow tools, but adds to that the ability to print in Optimized PostScript to unlicensed printers, enabling larger print jobs to be produced in the fastest possible time while controlling page-based finishing and sub-finishing options.

#### Input and output capabilities:

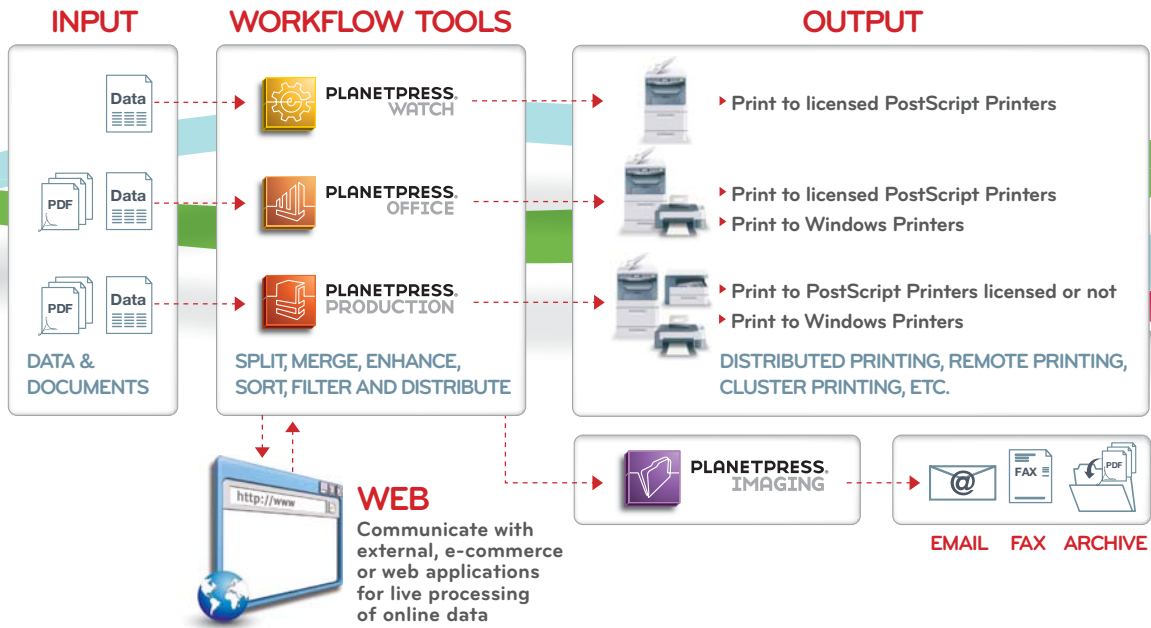


#### Input Types

Input Type	PlanetPress Watch	PlanetPress Office	PlanetPress Production
<b>Data</b> (ASCII, Line Printers, CSV, Databases, Channel Skip, XML)	✓	✓	✓
<b>Documents</b> (PDF – any document which can be converted to PDF, independently of the application it was created with)		✓	✓

#### Output Types

Output Type	PlanetPress Watch	PlanetPress Office	PlanetPress Production
<b>OL Licensed PostScript® printers</b> (Printer Centric Optimized Postscript)	✓	✓	✓
<b>Any printer using a Windows® driver</b>		✓	✓
<b>Unlicensed PostScript printers</b> (Optimized PostScript)			✓
<b>Standard PDF</b>		✓	✓



THE WORKFLOW TOOLS  
**FEATURES:**

**Document Input**

PlanetPress Office and PlanetPress Production can capture and process fully composed documents by extracting their text contents and applying business rules whether to add or modify contents, apply finishing options, set distribution and archiving rules or split/concatenate existing jobs. The Document Input can process any ready-made PDF file or any print stream sent to the new Objectif Lune Printer Driver by any Windows application.

**PDF handling tools**

PlanetPress Office and PlanetPress Production offer true automated PDF workflow with native PDF creation, tasks to split and merge PDF files and workflow conditions based on PDF contents.

**Metadata**

Metadata is data about other data. The PlanetPress Workflow tools have a Metadata feature used to extract data attributes from data found in your documents in order to further process them. For example, zip codes and page count can be extracted for address sorting, customer numbers can be extracted for cross reference with a separate database or summary information can be extracted for archiving. The possibilities are endless!

**Numerous data sources**

Data can be captured from the host via LPD, Windows-based print queues, shared folders, email messages (Outlook and POP3), ODBC-compliant databases, Telnet, FTP and RAW Socket printing.

**Output options**

Data or digital documents can be sent over a LAN/WAN to Desktop, Multifunctional and/or Production printers, folders, FTP sites, email or fax recipients and more.

**Extended scripting capabilities**

The PlanetPress Workflow tools will automate the execution of any ActiveScript program (VBScript, JScript, PerlScript, etc.) installed on your system to further process your data, allowing custom functions to be a part of the workflow.

**HTTP Server**

The PlanetPress Workflow tools include an HTTP Server, able to process HTTP GET/POST requests. Optimize your workflow with real-time fulfillment of requests and gain advantages from interconnectivity with e-commerce applications.

**HTTP Client**

The PlanetPress Workflow tools can also actively communicate with a third-party Web Server and launch a process using the response from that Web Server. Use the PlanetPress Workflow tools to automatically monitor the content of a third party web server for online data repurposing.

**SOAP connectivity**

The SOAP connector handles all types of complex applications, allowing PlanetPress Suite to communicate with just about any third party application. In addition, all PlanetPress Suite workflow tools can be configured as SOAP servers, allowing third-party applications - such as Web-based front ends - to submit jobs directly into PlanetPress Suite remotely.

**Bidirectional communications**

To eliminate downtime, use SNMP conditions to reroute the data if the printer is offline, out of paper, etc. The PlanetPress Workflow tools also allow you to optimize output productivity by easily implementing distributed printing workflows.

**Windows service**

PlanetPress Workflow tools and PlanetPress Imaging run as Windows services for enhanced security and peace of mind.

**Cluster printing**

Automatically distribute PlanetPress Design documents to clusters of printers. Perform queue balancing, round robin or job splitting for greater speed and efficiency.

**Job splitter**

Set rules to split single jobs into several data streams based on values or characters found in the data.

**Reprints**

Backup all print jobs for a user-defined period, allowing for reprints.

**Extended logging capabilities**

Each job is logged. The PlanetPress Workflow tools interface with the Windows Event logs to provide valuable information helping you with the ongoing development of your operation.

**Automatic Database conversion**

The database plug-in has the ability to convert data files in XML, CSV, or fixed-length mode on the fly.

**Unlimited Custom Variables**

Define, set and use an unlimited number of custom variables. Users can create process-wide (aka Local Variables) custom variables that can be reused across all branches of a single process, and configuration-wide (aka Global Variables) custom variables allowing information to be carried across processes, making inter-process communication possible.

**OBJECTIF LUNE**  
BUSINESS COMMUNICATIONS - YOUR WAY

For more information contact  
your local office, or visit:

[www.objectiflune.com](http://www.objectiflune.com)