

# Authentication module



Have access to copying and scanning under control

The Authentication module brings perfect access security to copying and scanning on all multifunction printers within your print environment. We recommend combining it with at least one other module to get more user benefits. For example, in combination with Print Roaming, you can also control access to print and printing through a secure print queue.



## How Authentication will simplify your life

### Administrator

- Each user wanting to copy or scan must first log in to the machine. So I am confident that the printers are not used improperly.
- Thanks to the Authentication, I have less work with manual administration of accounts and access to multifunction printers. I can connect YSoft SafeQ directly to the database of users and import information about accounts and cards from it. New users can also register a card onto the system through self-help.

## Authentication module properties

- User authentication directly at the integrated terminal YSoft SafeQ Embedded Terminal or on hardware terminals YSoft SafeQ Terminal Professional and YSoft SafeQ Terminal UltraLight
- Various methods of user authentication – ID card, PIN, username and password or their combination
- The new user can assign an ID card to the system themselves directly at the terminal (optional)
- Direct print queue – direct printing at a predefined printer without the need of user authorization



## Company manager

- Thanks to the management of access rights to the printer, the document always gets into the right hands. Because copying or scanning is only unlocked after the relevant employee logs into the machine.
- We have gained control over whom and on which device copying or scanning happens.
- We are always certain that only people that are authorized are copying or scanning.
- Users can log in to the YSoft SafeQ system using the same ID cards that are used for attendance or access to the building. There are no additional costs for purchasing and card management.



## Recommended combination with other modules



### + the Print Roaming module – for secure printing

Users gain a greater degree of freedom and printing processes become more efficient. Each job sent to the print is placed in the system queue and is waits for its owner to logs onto a printer. The user can select any machine within the network, for instance, depending on which is the closest. You will not only increase your user comfort but also secure all printed documents and prevent their potential misuse.

### + the Reporting module – an overview of using printing and copying

If you want to have clear reports about the use of individual printers available or about how much printing or scanning each user or group of users did, also use the Reporting module.



### + the Credit and billing module – the possibility to charge for copies and scans

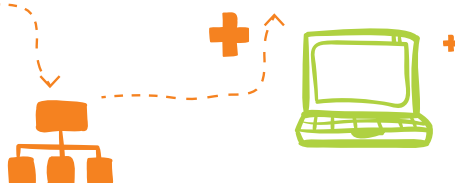
If you plan to charge users for printing and copying in your company or institution, the Credit and billing module will allow you to do it. For securing printing and protection of sensitive documents, we recommend that you also buy the Print Roaming module, which brings you print via a secure queue (the job is printed after log in at a printer).

### + the Scan Management module – for quick and easy scanning

You will allow users exceptionally easy scanning to their home folder or mailbox. Scanning will be also easier for them thanks to an adapted and personalized scanning workflow.



If you buy the Print Roaming or Scan Management module, the Authentication module is directly necessary for them to function correctly. The Authentication module must always be part of an order of any of the following modules.



**YSOFT**®