

**Canon**

CANON SOLUTIONS AMERICA

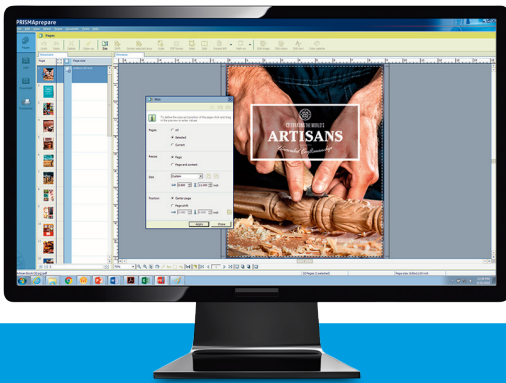
PROFESSIONAL  
MAKE-READY SOLUTION



PRISMAprepare

 CANON SEE IMPOSSIBLE

# PERFECTING PREPARATION



## AT-A-GLANCE

THE POWER OF SEVEN MAKE-READY CAPABILITIES



### Composition

Fast and easy document preparation, including integrated variable data print preparation.



### Content

Easily adjust text, images, and more.



### Image

Optimize photos or scans.



### Color

Built-in tools give you the control to adjust and change colors as needed.



### Layout

Refine layout—including finishing options—and visualize changes in true WYSIWYG.\*



### Media

Select media for every page of every job.



### Production

Optimize settings for the speed and efficiency of your total production process—every time!

\*WYSIWYG stands for What You See Is What You Get.

# PRISMAprepare DOCUMENT PREPARATION SOLUTION HELPS ACCELERATE MAKE-READY FROM COMPOSITION THROUGH PRODUCTION.

## RECLAIM YOUR PRODUCTIVITY

In the real world, customer jobs rarely come in ready to print, and the extensive time and effort needed to get these documents into shape can impact your business considerably. Fortunately, PRISMAprepare can help to significantly improve productivity.

## EFFORTLESS DOCUMENT PREPARATION

PRISMAprepare is an easy-to-use, all-in-one document preparation solution that helps you optimize the composition, content, image, color, layout, media, and production make-ready aspects of every job. It helps streamline your prepress workflow, reduce the time needed to prepare documents, lower your production and labor costs, and minimize waste.

## VERSATILE, POWERFUL TOOL

With PRISMAprepare, you can collect and clean up pages from digital or hard-copy sources, PDF, or Microsoft® Office\* native files. You can enhance documents, assign media attributes, create inserts, and more. Preview—right on screen—every step in the preparation process and virtually eliminate the need for hard-copy layout proofing.

## OUTSTANDING COLOR CONTROL

PRISMAprepare makes it easy to optimize image color brightness and saturation. In fact, the integrated color management capabilities let you replace, change, or modify colors, as well as quickly access PANTONE® MATCHING SYSTEM® and spot color libraries.

## CHALLENGING TASKS SIMPLIFIED

Now, tasks like creating booklets, imposition, creating single- or double-sided tabs, color splitting, and composing documents for variable data printing (VDP) can be done easily and cost-effectively. And, since the software uses open standards, you have the ability to print to any digital press accepting PDF, PCL, and Adobe® PostScript® files, protecting your previous investment.

## SUPERB PERFORMANCE AT LOW COST

With PRISMAprepare, you benefit from simplified job preparation from composition all the way through production. This can help you handle the maximum volume of work with optimal quality, while meeting the toughest deadlines your customers can impose—all while more tightly controlling your operating costs.



## IMPROVE YOUR OPERATIONS

### WYSIWYG INTERFACE

Reduce errors and decrease proof prints with powerful previews that let you see exactly what the end print product will look like—right on screen. Finishing options included!

### ADVANCED COLOR CAPABILITIES

Optimize image color, brightness and saturation, change colors, create custom spot colors, access standard PANTONE MATCHING SYSTEM, spot color libraries, and more.

### TIME SAVINGS

Save time and accelerate turnaround by creating and applying templates for jobs that use the same layout and settings.\*\*

### EASY TO USE

Simple user interface helps ensure that even an inexperienced operator can master any document preparation task quickly—and deliver high-quality results every time.

\* Microsoft Office Suite 2007 or higher is required to be installed on the workstation from which PRISMAprepare is operated.

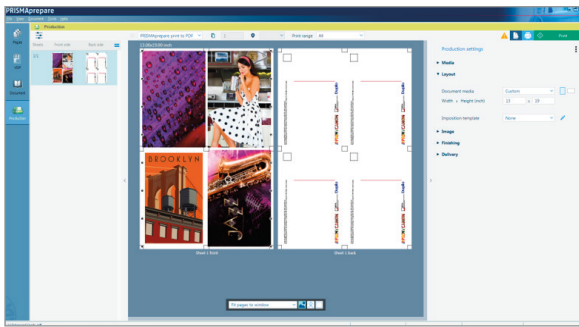
\*\* Software capabilities described in this brochure relate to PRISMAprepare configured with Automation and Preflight options.

# EASY PREPARATION

## POWERFUL MAKE-READY CAPABILITIES HELP YOU PRODUCE GREAT WORK WITH EASE

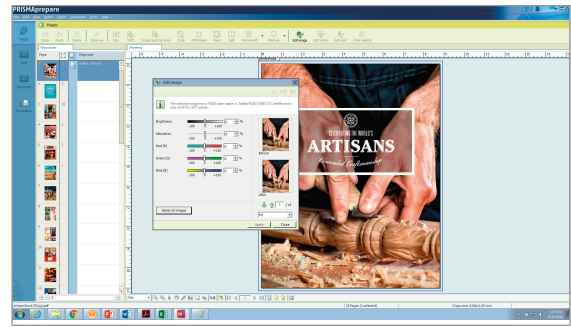
### COMPOSITION MAKE-READY

File conversion NOT necessary! Collect and combine PDF and Microsoft Office documents\* from a variety of sources into a single document with multiple sections. Save even more time with the ability to correct the document using preflight checks and an advanced subset handling capability that makes navigation through the document fast and easy. In addition, variable data printing (VDP) make-ready is easily performed right in PRISMAprepare, further enhancing your productivity and allowing you to offer personalized service to your customers.



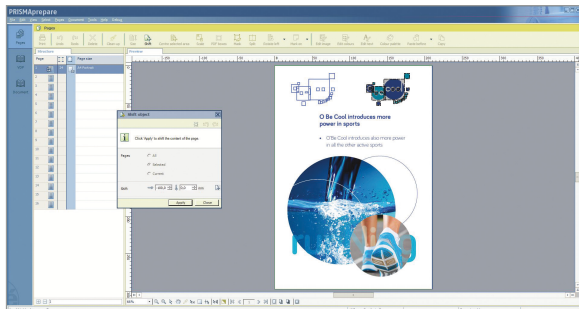
### IMAGE MAKE-READY

Get greater control over the quality of every image, with the power to correct imperfections in scanned or digital documents—black and white and color alike. Align margins and scale content to provide consistent appearance on every page, and remove staple and hole-punch marks or other undesirable artifacts. Deskew and despeckle to restore clarity to imperfectly scanned pages. Use the powerful stack and mirror stack views to process multiple pages instantly.



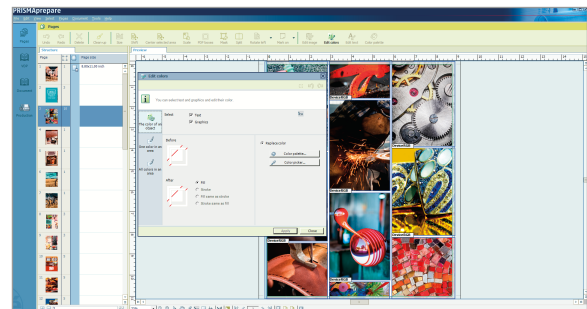
### CONTENT MAKE-READY

Reduce the need for costly customer resubmittals. Powerful content editing functions let you quickly and easily make a variety of last-minute adjustments to text, images, object placement, color, and more. PDF bleed, trim, and crop boxes can be visualized in Page Workspace, where you can modify size and position and define bleed color.



### COLOR MAKE-READY

The integrated color management tools in PRISMAprepare software make it easy to delight your customers with high-quality color. You can quickly modify image color, brightness, and saturation, and replace or change spot colors with the click of a mouse. Easily create custom spot colors or access standard PANTONE MATCHING SYSTEM and spot color libraries. And all this can be done without having to send the entire job back to the customer—even at the last minute.

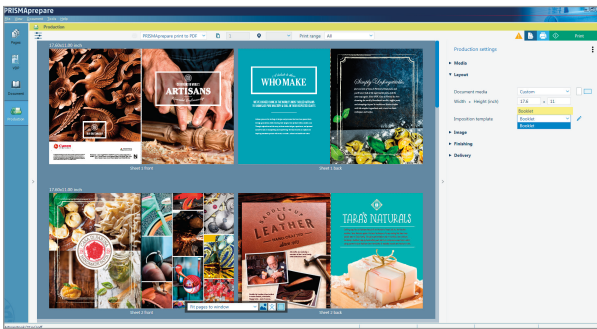


\* Microsoft Office Suite 2007 or higher is required to be installed on the workstation from which PRISMAprepare is operated.



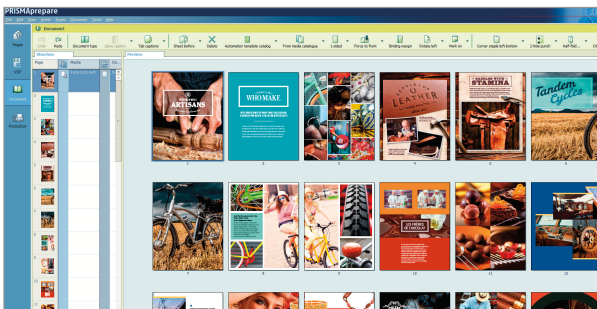
## LAYOUT MAKE-READY

Define the final document layout quickly and easily, and see the final preview as you work. Prepare booklets at the touch of a button, with the width of the spine and creep compensation calculated automatically. Create single- or double-sided pre-cut tabs, with up to three lines of text, using section file names, PDF bookmarks, or text files. Print square or rounded full-bleed tabs in black or color, even making each section a different color, if desired. Add stamps, watermarks, logos, or signature to pages, and images to tabs or spine. WYSIWYG fold lines help you align image positions, making multifolded document preparation easy.



## MEDIA MAKE-READY

PRISMAprepare gives you total control over selecting the most suitable and cost-effective media type for each job. You can assign specific media to individual pages and sections or complete documents. Media selection is quick and easy from the PRISMAprepare device-independent media catalog.



## PRODUCTION MAKE-READY

Easily add gutters, margin shifts, color control and information bars with remarks, file name/date, and more. Use advanced color marks to automatically detect color in the whole document or in selected page areas, controlling what prints in color. For mixed documents, use the automatic color split capability to print the color pages on a color device, then insert and print the remainder of the document using an often faster or more cost-effective black-and-white digital press.

Add barcodes or print marks, or automate the setup of supported nearline finishers\* by using the optional Prepare to Finish Connector to Ultimate Bindery software.

With soft proofing capability, there's no more printing out and mailing layout proofs; just send PDF soft proofs right to the client's email inbox for fast, onscreen approvals.

\* Ultimate TechnoGraphics maintains the latest finishing devices support list, which is available via this link to Ultimate TechnoGraphics' webpage <http://imposition.com/en-us/Ulimate-Bindery-Supported-Finishing-Devices>. Ultimate Bindery V4 or higher is required subject to third-party service provider's terms and conditions.

# PRODUCTION WORK SPACE

## SIMPLE, YET POWERFUL

### ONE POWERFUL VIEW

Production Work Space was developed to help enhance operational efficiencies and provide the user with all the tools required to simply create documents from composition to production. With this one powerful view, you have the ability to:

- Switch between different workspaces without losing your settings
- Access Sheet Preview
- Access production dedicated settings that are present and available on sheet preview
- Measure the imposed file using guidelines without having to print the PDF in the page work space
- Select the imposed page with just one click with the Structure View



## WYSIWYG ACCURACY

### HELP ENHANCE ACCURACY, REDUCE WASTE

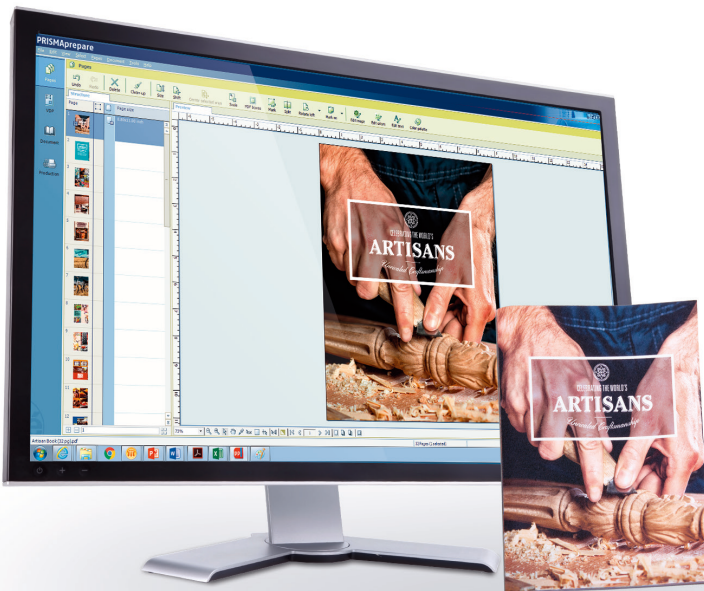
With the software's WYSIWYG job preparation capabilities, what you see on the screen is exactly what will print. Help reduce wasted time, effort, or hard-copy layout proofs needed before they're ready.

### DETAILS ARE ACCOUNTED FOR

WYSIWYG applies to layout and finishing options as well. You can display the position of staples, hole-punches, and folds, and shift page content to accommodate fold lines and other finishing artifacts on the fly and you can position spine captions or text on tabs as desired.

### OVERSIGHT AT A GLANCE

Using thumbnail view to navigate through the document can make it fast and easy to select, insert, or arrange pages.



# MAXIMIZE YOUR INVESTMENT

## OPEN STANDARDS

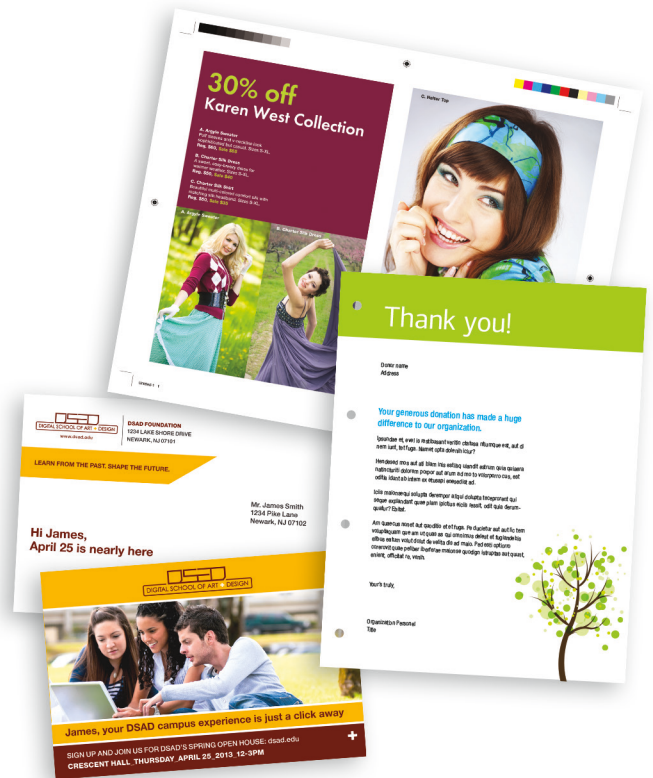
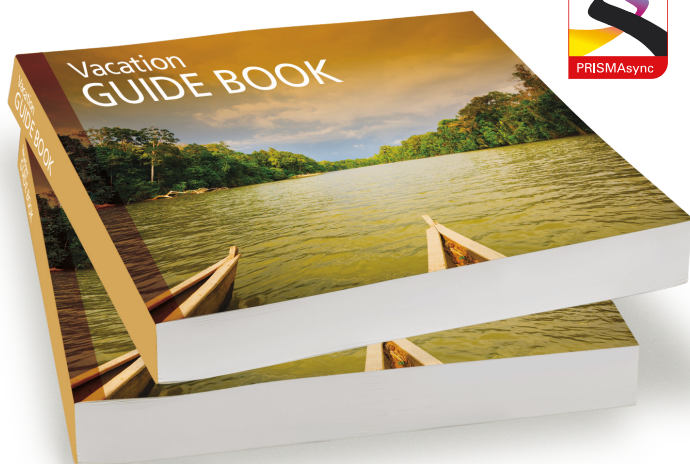
**HELP UNLEASH THE FULL POWER OF YOUR ENTIRE FLEET**  
PRISMAprepare make-ready software is virtually device-independent, allowing you to prepare documents for production on the Canon varioPRINT DP Line, the Océ VarioPrint 6000+ Series, the Canon imagePRESS, and Canon imageRUNNER ADVANCE Series, or other select printers accepting PDF, PCL, PS files.\*

## OPEN INTERFACE

Leverage many existing creative tools for detailed content editing. PRISMAprepare supports direct linking of up to 10 different Windows®-based stand-alone PDF applications. You can open a page of your document from PRISMAprepare in Adobe® Photoshop®,\*\* Adobe Illustrator®,\*\* or another compatible PDF-based editing tool. After making the desired edits, the changes are directly applied to your document in PRISMAprepare.

## INTEGRATED WORKFLOW

Although PRISMAprepare is a stand-alone solution, it can also be integrated into a broader workflow solution such as PRISMAdirect, which is designed to help streamline the order and production management from job submission to finished product. All PRISMA workflow solutions share a common user interface that's designed for added ease of use and shorter learning curve. Pairing PRISMA workflow solutions with Canon's PRISMAsync family of print servers for digital production presses offers maximum integration and productivity.



## AUTOMATED WORKFLOW

### AUTOMATED MAKE-READY FROM START TO FINISH

With the optional PRISMAprepare automation capabilities, you can automate your prepress workflow by creating and applying templates for jobs that use the same layout and settings. Templates can be easily exported from, and imported to, other PRISMAprepare systems.

### POWERFUL FLEXIBILITY

For added flexibility, PRISMAprepare's powerful hot folder functionality and a command-line interface let you automate make-ready and reprint documents without the need to even open PRISMAprepare.

### PREPARE ONCE, PRINT VIRTUALLY ANYWHERE

Because PRISMAprepare software is virtually device-independent, you can help reduce setup time and accelerate turnaround to help improve customer service, all while unleashing the full power of your production operation.

\* Digital press and printer support for PRISMAprepare and PRISMAprepare Light software versions vary. Please refer to the detailed specifications at the end of this brochure or ask your Authorized Canon Dealer for compatibility information.

\*\* For detailed compatibility information of PDF-based software applications, please contact your Authorized Canon Dealer.

# PRISMAprepare v7.1 System Requirements

## INFRASTRUCTURE SUPPORTED

- Operating System:** **32-bit OS**
- Microsoft® Windows® Server 2008 SP2 (Standard, Enterprise)
  - Microsoft Windows 10 (1703, 1709, 1803) (Professional, Enterprise)
  - Microsoft Windows 8/8.1 or Update 1 (Professional, Enterprise)
  - Microsoft Windows 7 SP1 (Professional, Enterprise, Ultimate)
- 64-bit OS**
- Windows Server 2016 1607 (Standard, Essential, Datacenter)
  - Windows Server 2012 R2 (Datacenter, Standard, Essential, Foundation)
  - Windows Server 2012 (Datacenter, Standard, Essential, Foundation)
  - Microsoft Windows Server 2008 R2 SP1\* (Standard, Enterprise)
  - Microsoft Windows 10 (Professional, Enterprise)
  - Microsoft Windows 8/8.1 or Update 1 (Professional, Enterprise)
  - Microsoft Windows 7 SP1\* (Professional, Enterprise, Ultimate)
- Windows Components:**
- Microsoft .NET Framework v4.712
  - Microsoft Core XML Services (MSXML) 6.0
- Native File Conversion:** MS Office 2010 or Higher
- File System:** NTFS >= 40 GB Free Space
- Network:** TCP/IP (IPv4 and IPv6), 100/1000 MB/s  
LPR Protocol enabled, if needed, to drive printer
- Other** Latest critical updates from Windows update

## HARDWARE REQUIREMENTS

- Processor:** Performance >= Intel Core i5  
An Intel equivalent (like AMD) or VMware Gx server that conforms to this performance demand can also be used.  
No restrictions concerning 32/64-bit hardware and single/dual core.
- Memory:** >= 2 GB (On VMware servers more memory may be required)
- Hard Disk:** >= 80 GB (UDMA, SATA / SCSI U320), RPM >= 7.2 K  
Average Seek <= 10ms, Average Latency <= 5ms
- Video:** >= 1280 x 1024, True colors (24/32-bit)
- Screen:** >= 19"
- Scanner:** TWAIN-compatible scanner (for import of paper originals)  
The Product is tested with the following scanners:
- Fuji fi-6670
  - Canon DR-510C
  - Kodak i370

PRISMAprepare Configurations		
	PRISMAprepare v7.1	PRISMAprepare Light Legacy
Make-Ready Capabilities	Image, Composition, Content, Color, Layout, Media, Production	
Advanced Document Creation		Optional
Advanced Imposition		Optional
Spot Color Editing		Optional
Scanning Clean Up		Optional
VDP		Optional
Automation		Optional
Preflight		Optional
Prepare to Finish		Optional
Concurrent Users		Up to 99
Supported Number of Printing Systems		Unlimited
Supported Engines (Canon)	Canon and Océ sheet-fed digital presses as well as high-end office printing and multifunctional systems supported**	Supported: Canon and Océ light- to mid-volume sheet-fed digital presses including imagePRESS C850/C750/C65, varioPRINT 140/130/115; High-end office printing/multifunctional systems including imageRUNNER ADVANCE Series models,** and imagePRESS C10000VP/C8000VP  (Not supported: Most mid- to high-volume sheet-fed digital presses including Océ VarioPrint i300, Océ VarioPrint 6000 Series, imagePRESS 1135 Series, imagePRESS C701xVP/S Series**)
Supported Engines (Other)	Output toward any printer using the standard Windows driver technology is supported. Limitations for media selection and finishing support apply**	

\* Prepare to Finish is a connector. Ultimate Bindery V4 Software has to be purchased separately.

\*\* Please contact your Authorized Canon Dealer for the latest compatibility details.

For more information, call or visit  
1.800.815.4000 CSA.CANON.COM



Canon and imagePRESS are registered trademarks of Canon Inc. in the United States and may also be registered trademarks or trademarks in other countries. Océ VarioPrint, Océ PRISMA, and PRISMA are registered trademarks of Océ-Technologies B.V. Océ is a Canon Company. All other referenced product names and marks are trademarks of their respective owners. All printout images and effects are simulated. Neither Canon Inc. nor Canon U.S.A., Inc. represents or warrant any third-party product or feature referenced hereunder. Specifications and availability subject to change without notice. Not responsible for typographical errors.

©2018 Canon U.S.A., Inc. All rights reserved

CSA/7-15-230  
1018R2-CSAPP-BRO-PDF-IH